

150 Series Wide Stile ATFP Blast Storefront Doors



***MANKO WINDOW SYSTEMS, INC.
800 HAYES DRIVE
MANHATTAN, KANSAS 66502
PHONE: (800) 642-1488 (785) 776-9643
FAX: (800) 576-2656 (785) 776-9644***

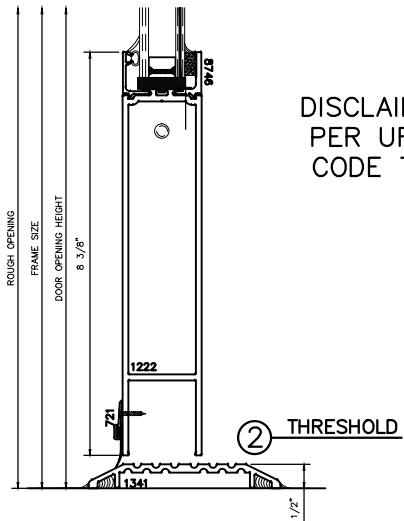
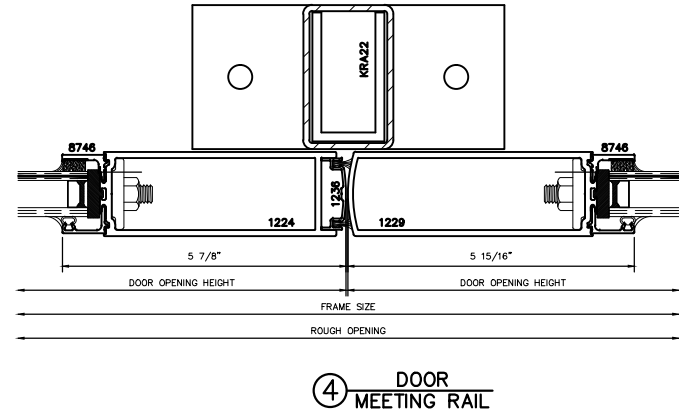
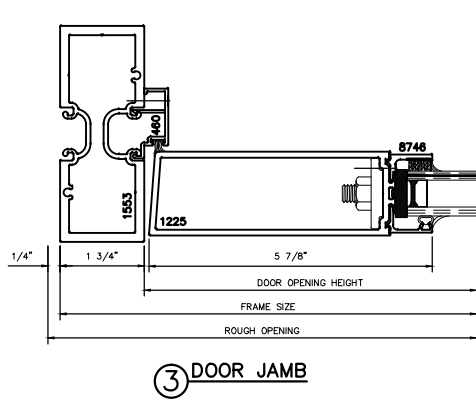
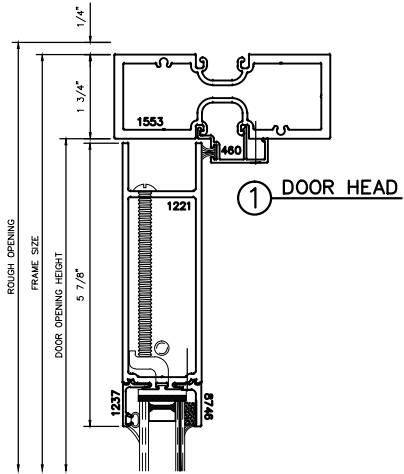
***MANKO WINDOW SYSTEMS, INC.
11000 EAST 51ST AVE. SUITE B
DENVER, COLORADO 80239
PHONE: (888) 642-1488 (303) 375-0642
FAX: (888) 576-2656 (303) 375-0669***



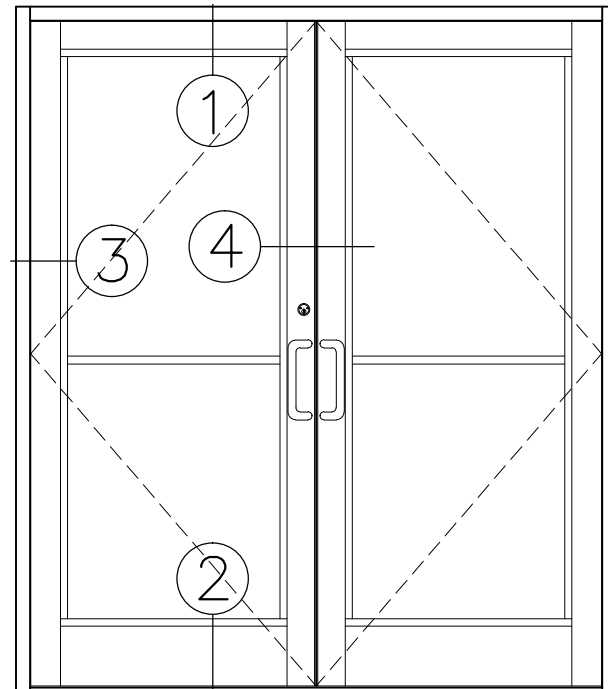
**150 Series ATFP Blast
Wide Stile Storefront Doors**

TABLE OF CONTENTS

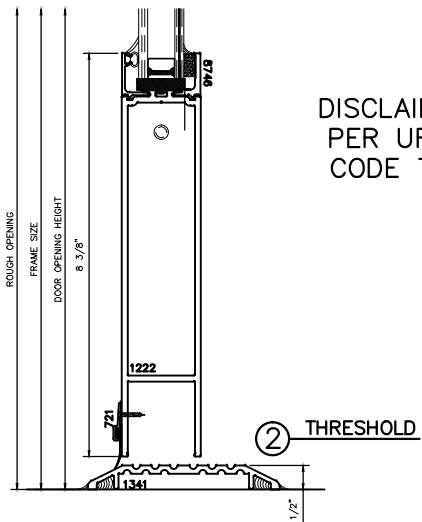
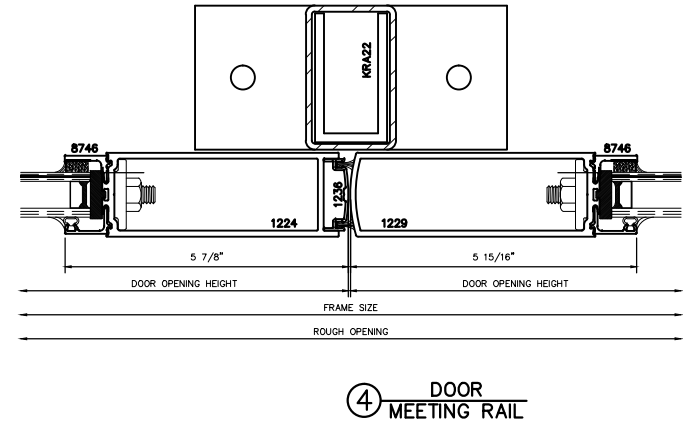
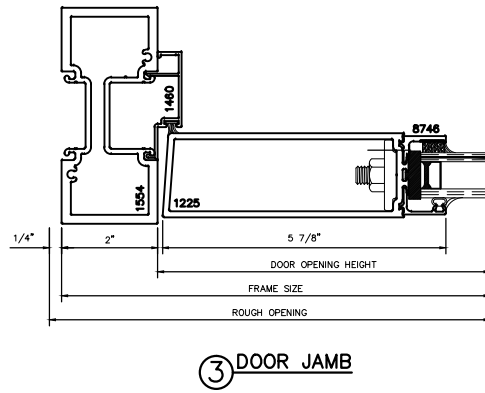
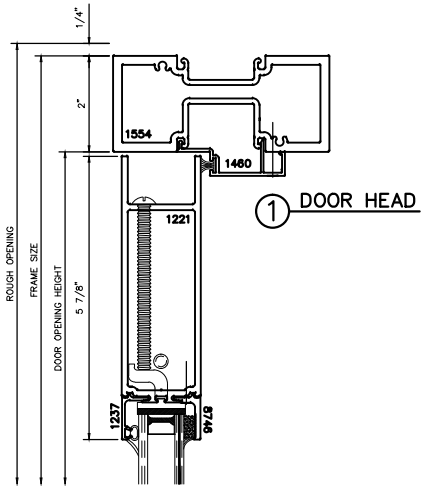
- 450 HEAVY WALL FRAMING 1
- 1450 HEAVY WALL FRAMING 2
- 250 CURTAIN WALL FRAMING 3



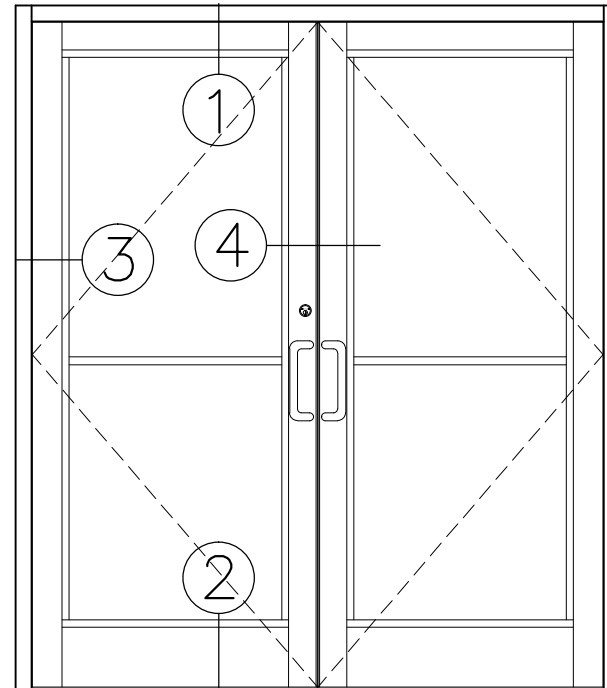
DISCLAIMER: ANCHORS AND INSTALLATION PER UFC BLAST AND FORCE PROTECTION CODE TO BE APPROVED BY STRUCTURAL ENGINEER



150 ATFP ENTRANCES
HEAVY WALL 1 3/4" DOOR FRAME



DISCLAIMER: ANCHORS AND INSTALLATION PER UFC BLAST AND FORCE PROTECTION CODE TO BE APPROVED BY STRUCTURAL ENGINEER



150 ATFP ENTRANCES
HEAVY WALL 2" DOOR FRAMING

